



T5 BATTEN LIGHTS



The T5 Batten Light is an integrated design for Cleanrooms and Dry Rooms applications. High-efficiency light engine with long life and excellent color ensures excellent quality light. They can be seamlessly connected to optional cables or connectors.

SKU: N/A



Applications

Cleanrooms for Automotive industry and Dry Rooms.

Components' description

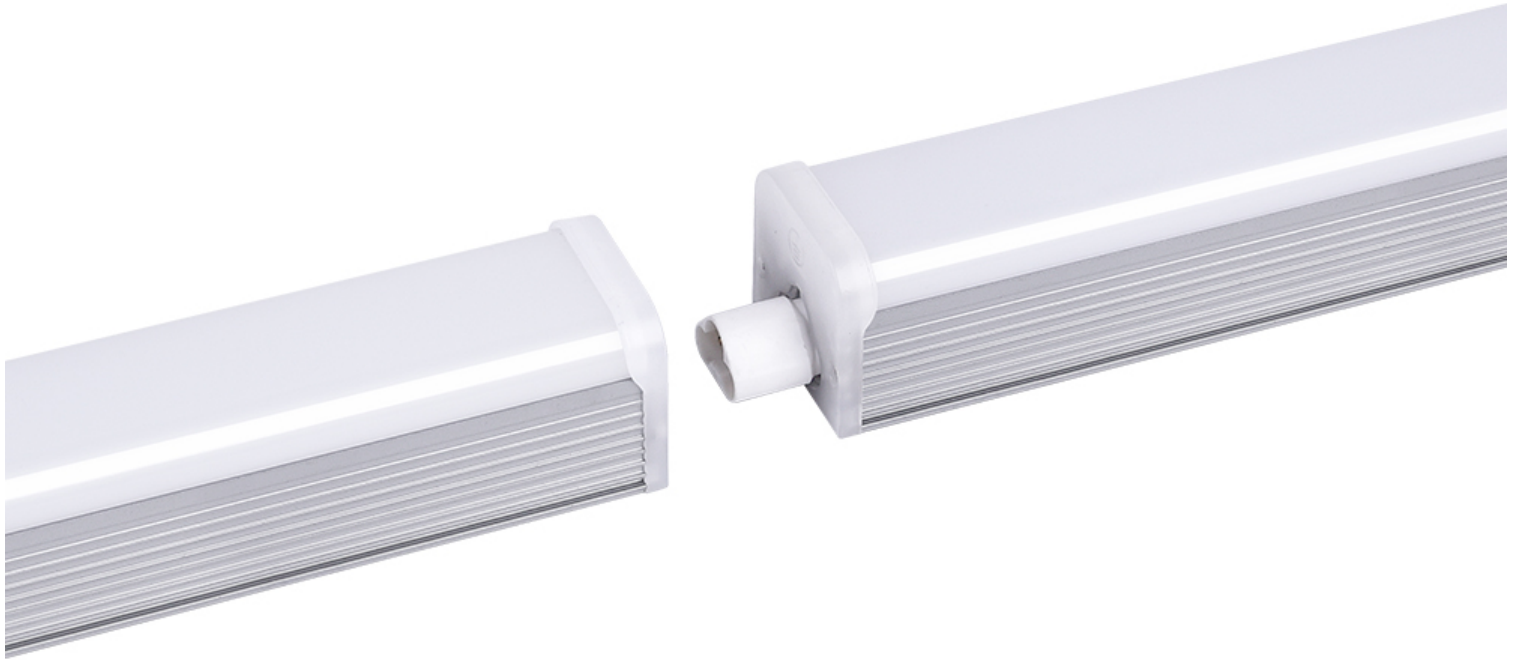
- Patent Male-female linkable design
- Seamless & No Dark in-line connection
- ETL TUV SAA approved, DLC Listed
- Maximum tandem wattage: 200W and 600W optional
- 0.8mm aluminum housing for excellent heat dissipation
- Heat protection system, with excellent internal driver
- Enjoy Hassle-free, safe and easy Installation

Optional accessories

- Functions: Standard Version / Triac Dimmable / ON-OFF Switch
- Connection Way: Lead in wire / M-F Connection / Power on back wiring
- Extention cable: Power cord with plug
- Installation Type : Standard Clip / Magnetic Clip / Suspending Kits
- Cover: Milky / Clear

















Input Voltage	AC100-277V 50/60Hz
Total harmonic distortion	THD<19%
Power Factor	PF>0.95
Efficiency	110-130LM/W
Color Index	Ra>82
Switching Time	100,000
Lumen maintenance @6000h	>80%
Operation Temperature	-10°C ~ +50°C
UGR	<19
Life Span	50,000 hours
CCT	3000K,4000K,5000K,6000K
Material	Aluminum + PC



Model	Length	Power	Led type	Lumens (lm) ±10%
LY-T5SL600-15W	2ft/600mm	15W	SMD2835	1650 - 1800
LY-T5SL900-25W	3ft/900mm	25W	SMD2835	2750 - 3000
LY-T5SL1200-30W	4ft/1200mm	30W	SMD2835	3300 - 3600
LY-T5SL1200-40W	4ft/1200mm	40W	SMD2835	4400 - 4800
LY-T5SL1500-40W	5ft/1500mm	40W	SMD2835	4400 - 4800
LY-T5SL1800-44W	6ft/1800mm	44W	SMD2835	4840 - 5280
LY-T5SL2400-60W	8ft/2400mm	60W	SMD2835	6600 - 7200