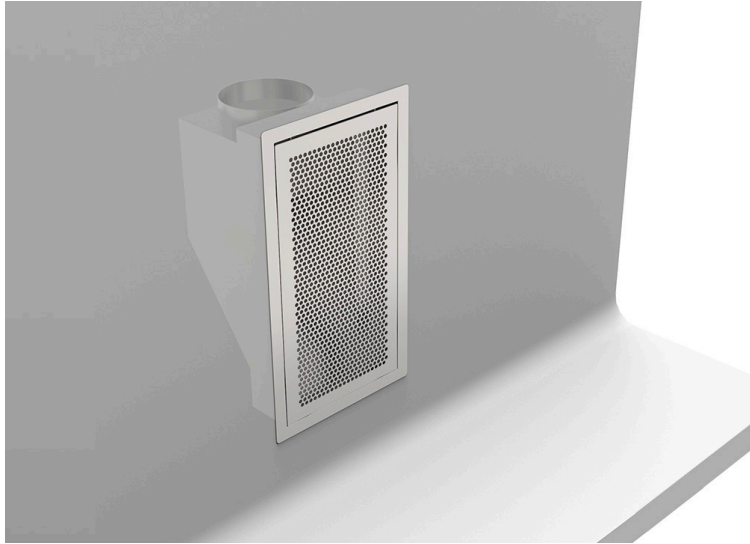




INTAKE AIR GRILLES FOR RECESSED WALL MOUNTING



Length	250, 400, 600, 1300, 1600, 1900, 2350
Nr. intake tubes	1, 2, 4, 5, 7

Made of stainless steel AISI 304 with scotch brite or mirror finish. Prepared for recessed wall installation and to be levelled with the wall. With removable perforated screen and with air intaking tubes, increasing in number in proportion to the size.

SKU: N/A



	P	W
L	Cod.	
250	T95201001	1
400	T95201002	1
600	T95201003	2
1300	T95201004	4
1600	T95201005	4
1900	T95201006	5
2350	T95201007	7

W = Width / Profondità / Breite / Profondeur.

L = Length / Larghezza / Länge / Longueur.

N = Nr. intake tubes / Nr. canotti di ripresa / Luftansaugröhren / Nr. des tubes de reprise d'air.