



WRITING STAND WITH 1 HINGED DOOR AND 2 DRAWERS ON FEET



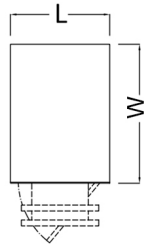
Length	550
Width	500, 600, 700
Hinged door opening	left, right

Entirely manufactured in stainless steel AISI 304. Hinged door mounted on removable hinges. With 2 drawers mounted on stainless steel rails. Inclined writing top with front bended edge to prevent paper drop. On adjustable telescopic stainless steel feet.

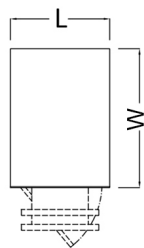
SKU: N/A



		W		
		500	600	700
L	Cod.	Cod.	Cod.	Cod.



550	T11401001	T11402001	T11403001
-----	-----------	-----------	-----------



550	T11501001	T11502001	T11503001
-----	-----------	-----------	-----------

W = Width / Profondità / Breite / Profondeur.
L = Length / Larghezza / Länge / Longueur.